



Euroopa Maaelu Arengu
Põllumajandusfond:
Euroopa investeringud
maapiirkondadesse

EPKK Aretuskonverents 8 April 2022


A Global Perspective on Profitable Livestock
Production

PJ BUDLER
Global Livestock Solutions



PJ Budler - Introduction

PJ BUDLER
SINCE 1996
GLOBAL LIVESTOCK SOLUTIONS
CONSULTING · GENETIC SELECTION · MARKETING
EVENTS · INTERNATIONAL CATTLE JUDGE

A portrait of PJ Budler, a man in a dark suit, white shirt, and blue tie, looking slightly to the right. He is wearing a gold International Cattle Judge pin on his lapel.









8 Divisions of a cattle operation

Genetics – Herd Management – Nutrition – Animal Health
Marketing – Record Keeping – Forage Management – Human Resources

Fertility – Longevity – Adaptability - Efficiency

Most
important
economic traits
in a cattle
operation



Growth – Muscle – Milk - Marbling



Fertility

10 x more important
than growth

Longevity





Adaptability



Efficiency



Growth (Weight)



Muscle



Milk



Marbling

What size should a cow be?

1. Appropriate Nutrition and Management
2. Calve by 27 months
3. Conceive in a 90-day breeding season
4. Do this annually and on time
5. Establish a minimum weaning weight at 7 months
6. Calf must be at least 45% of the cow's weight at 7 months
7. Do this every year and within 4-5 years, your cows will be the right size for your environment, resources and objectives



Evaluating Structure and Phenotype

- Eat, Walk and Reproduce
- Focus on the 4 most important economic traits (Fertility, Longevity, Adaptability, Efficiency)
Then build on that foundation with the next 4 (Growth, Muscle, Milk, Marbling)
- Quality cattle come in all different shapes, sizes and colors. Its easy to make a big one or a small one, a black one, a white one or a red one. The art of breeding lies in making a good one. Make sure that the good one fits your environment, resources and objectives

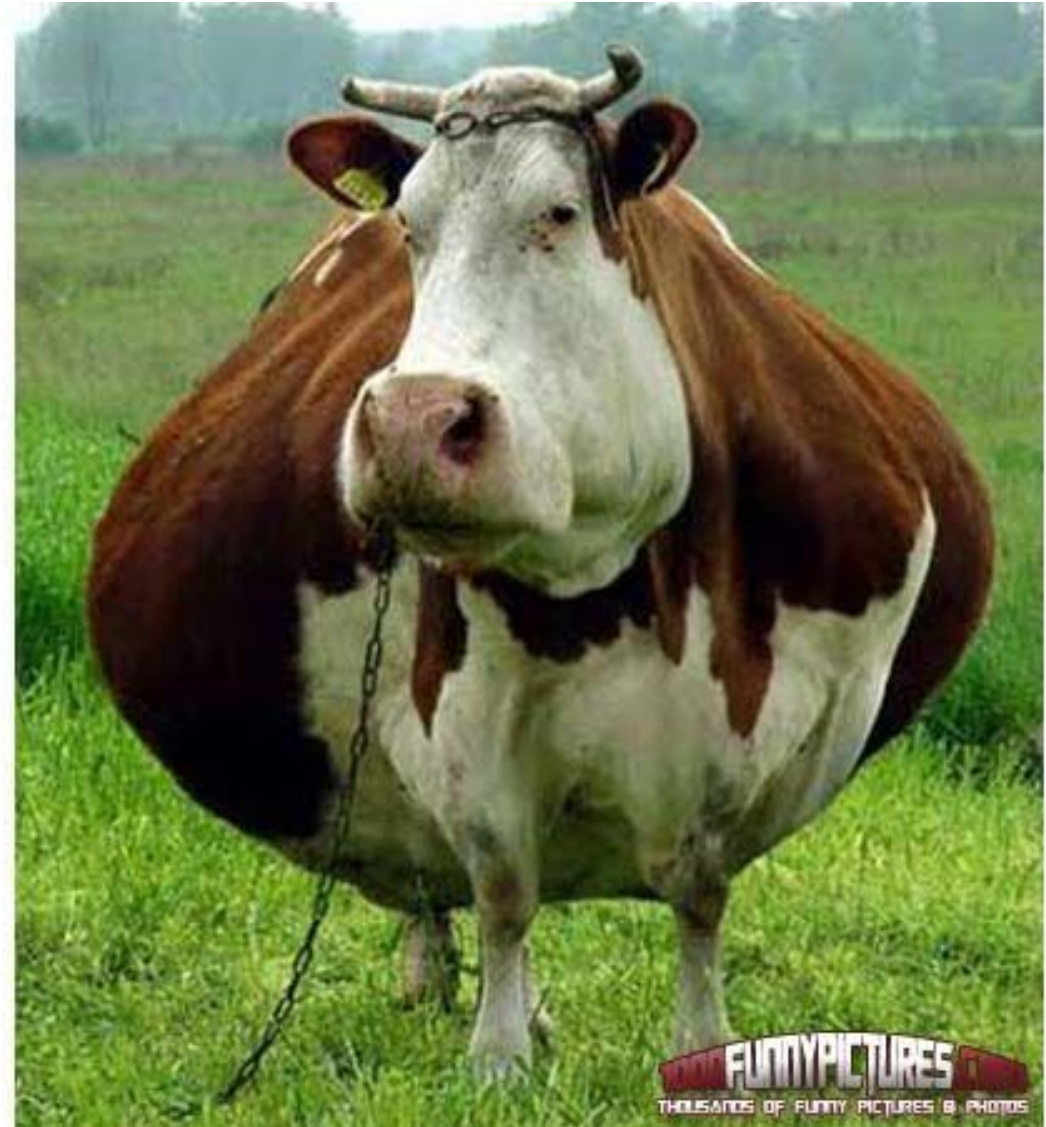


FAT

Good, bad or ugly?

Positive Correlations:

Body type, maturity pattern,
fertility, temperament,
do-ability, hardiness, carcass
quality





Balance

Opportunities

Growing Demand – Limited Resources

- China

- USA (More practitioners/fewer cows)



Humane



Humane & Sustainable



Sustainable

Challenges



Subsidies



Quotas



Communism



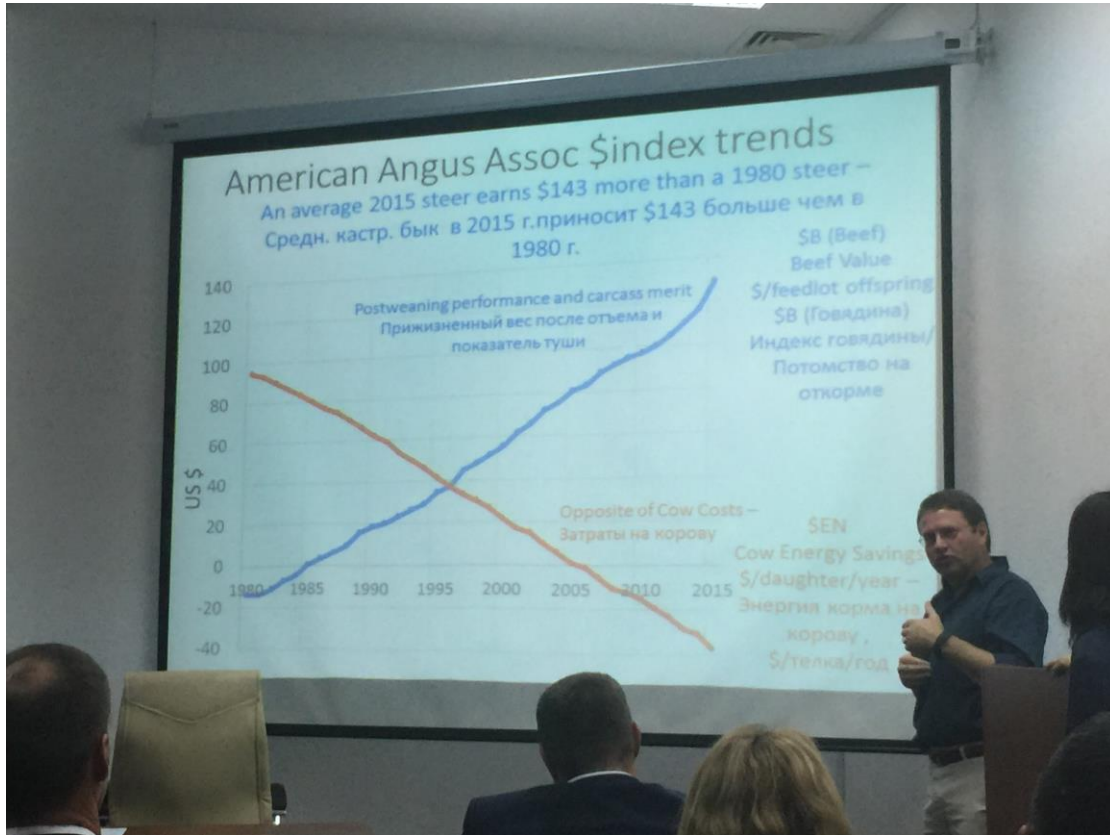
Socialism



Wars



Political Unrest



EPD's & Genomics



Recreation

DEATHS FROM GMO CONSUMPTION

OVER THE LAST 30 YEARS BY COUNTRY



THE FOSSIL FUELS

oil



natural gas



coal

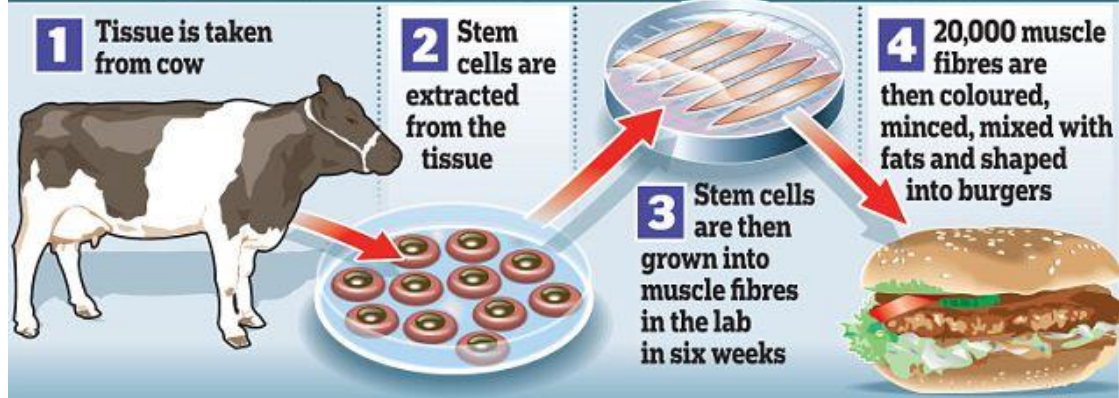






Religion & Politics

HOW THE BURGERS ARE GROWN

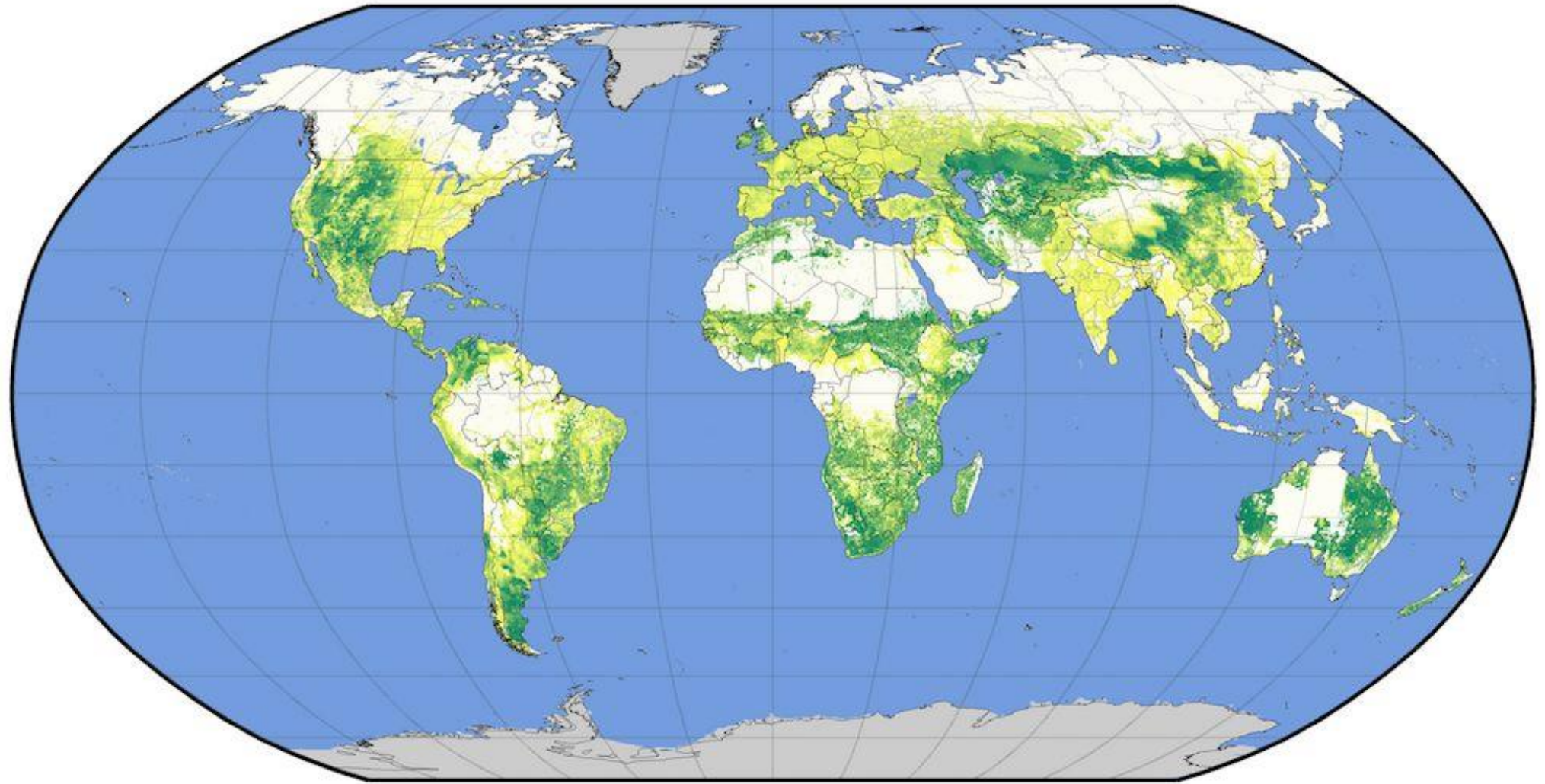


A vegan diet kills a lot of animals!



Climate Change Deniers!

global pasture area



percent pastureland





75% of the world's cattle population is in these 5 countries



TOP 5 COUNTRIES BY CATTLE INVENTORY

1. India – 330 million
2. Brazil – 220 million
3. China – 130 million
4. USA – 94 million
5. Argentina – 50 million



NO. 1 BEEF PRODUCER IN THE WORLD

USA



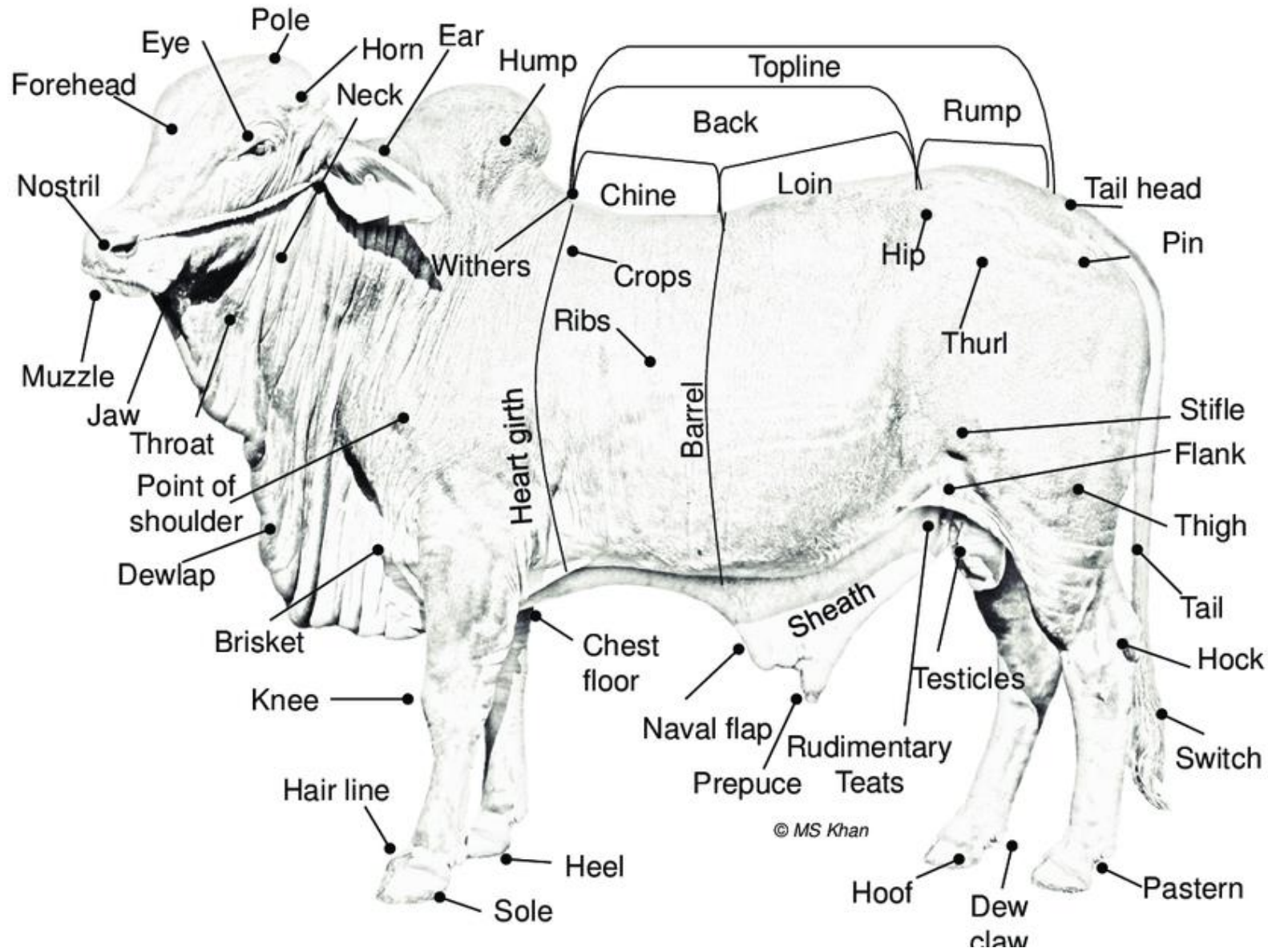
Every country in the world either has cattle, eats beef or does both



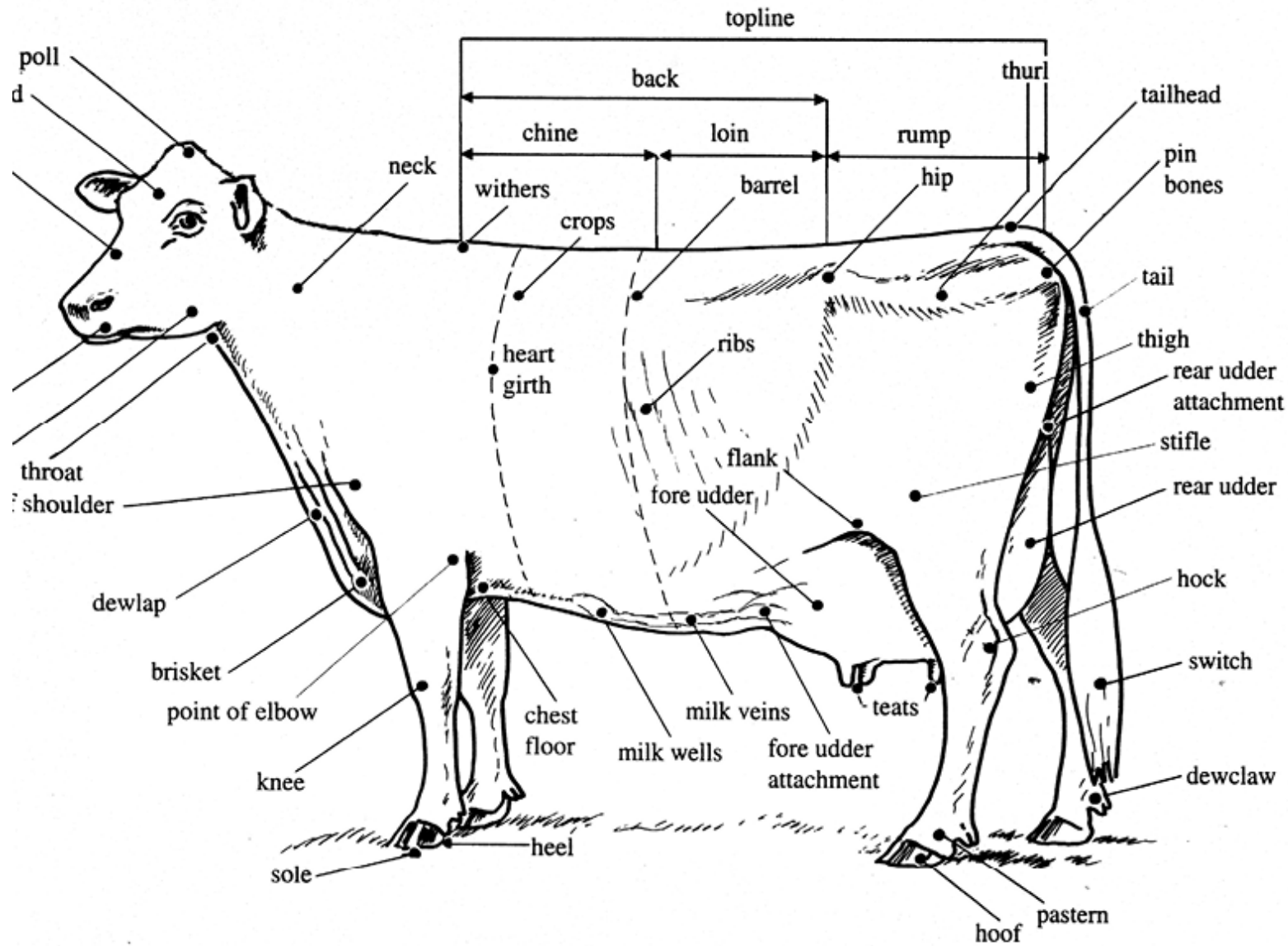
Phenotype vs Genotype?
The most important selection tool

Phenotype
Estimated Breeding Values/Estimated Progeny Differences
In-herd Indexes
Pedigree





BODY PARTS OF A BULL



Body parts of a cow

Evaluating Females

https://www.youtube.com/watch?v=QIV0e5pfDAI&feature=emb_log
o

Eat, Walk, Reproduce



Udder Quality



What's in a head?





Correct



Too straight



Sickle-hocked



Normal



Knock-kneed



Bow-legged



Correct



Bow-legged



Cow-hocked



Feminine Wedge Shape when analyzing body dimension



Maternal and Terminal Body Types



Temperament is an economic trait





Hide color and its effects on Infra-red and Ultra-violet rays



Hair coats in summer and winter

Pigmentation



It all
correlates





Balance

Contact Information

PJ Budler
PO Box 470953
Fort Worth
Texas 76147
USA

www.PJBudler.com

WhatsApp: +1 682 597 0380
Email: pj.budler@transova.com

