



Trends and market situation impact for dairy feeding

Catalin Necula
European Ruminant On-farm Coordinator
Alltech SDT





Cătălin Necula
Ruminant ON-Farm coordinator (Europe & CIS)
Solutions Deployment Team, Alltech

Education

- BS – Veterinary medicine, Bucharest University 2003
- PhD – Animal science, Timisoara University 2023

Area of Expertise

- Ruminant nutrition
- Animal health
- Farm management

Area of Interest

- Nitrogen metabolism
- Metabolic diseases and transition period
- Tools for real time data collection

World price index



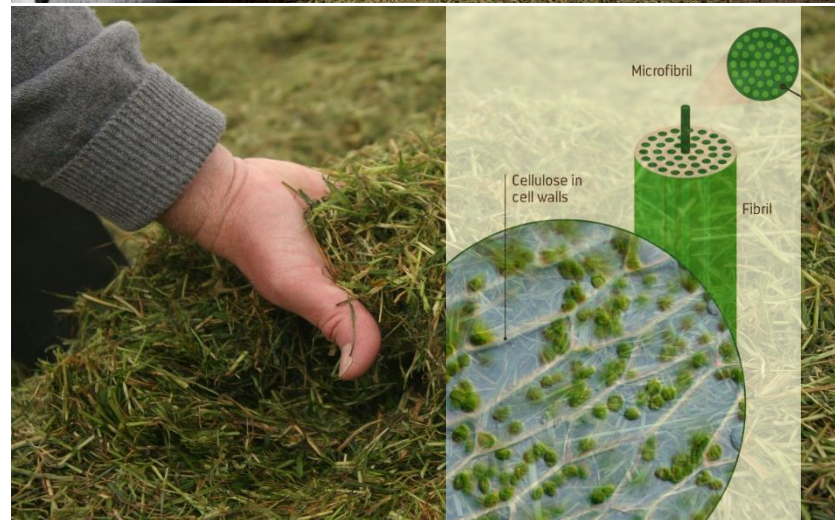
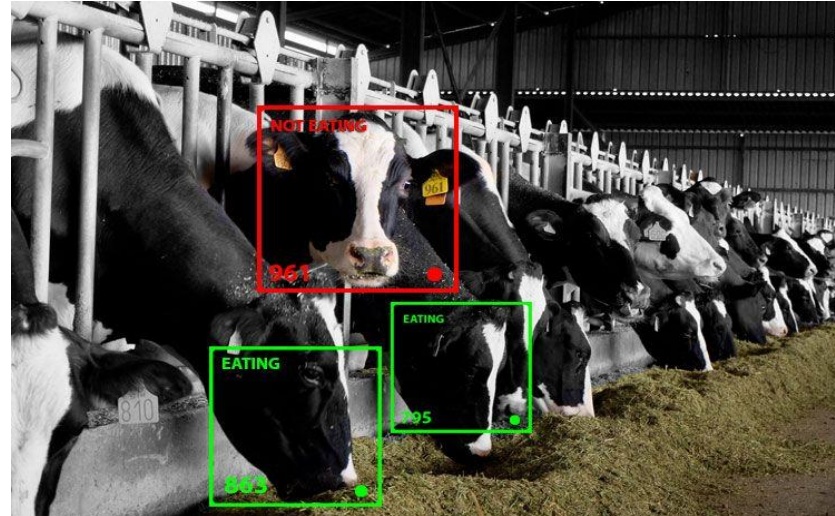
Food and Agriculture
Organization of the
United Nations



What's different now?

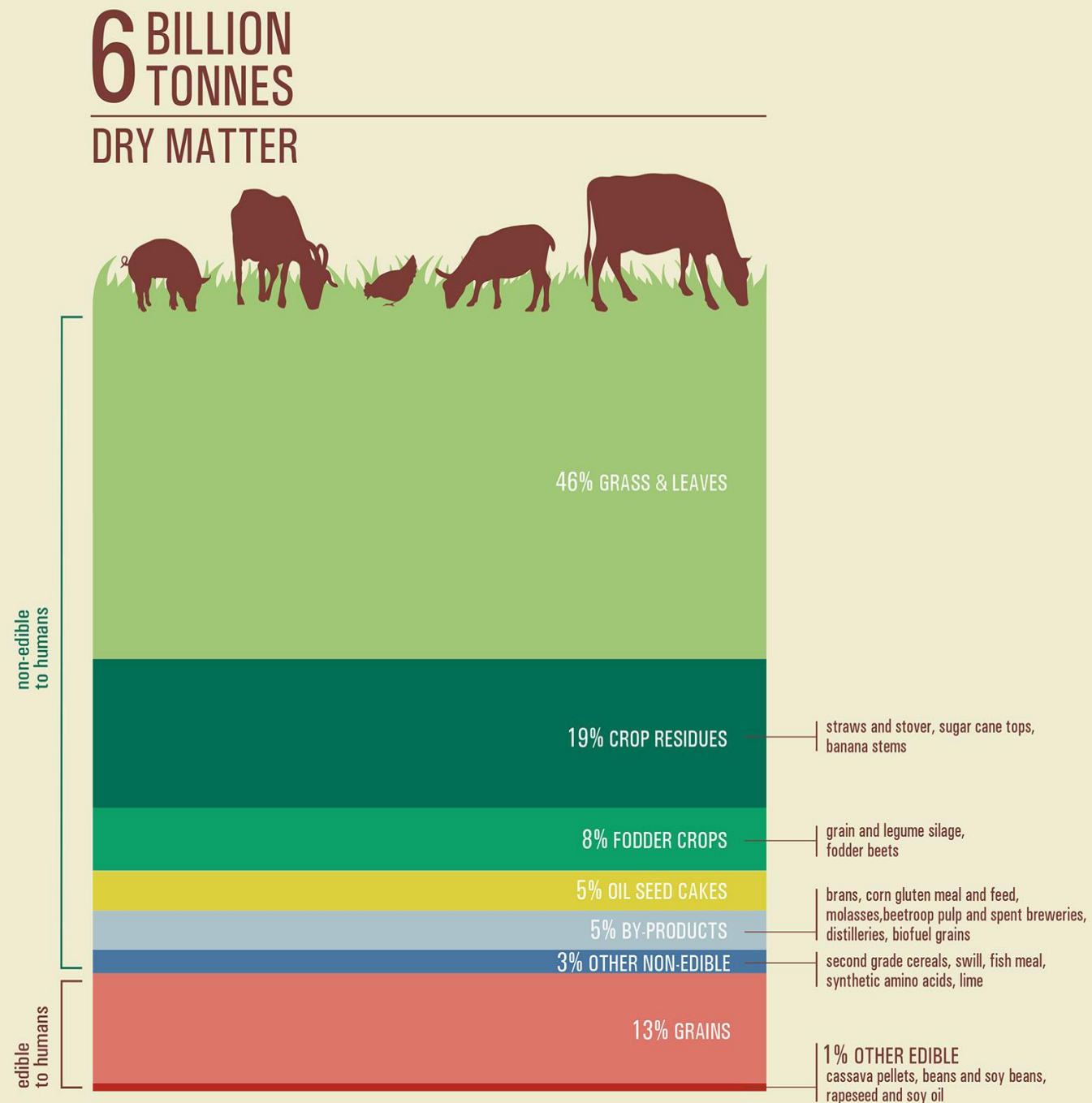


Areas we need to focus



Ruminants are not competing with humans for food

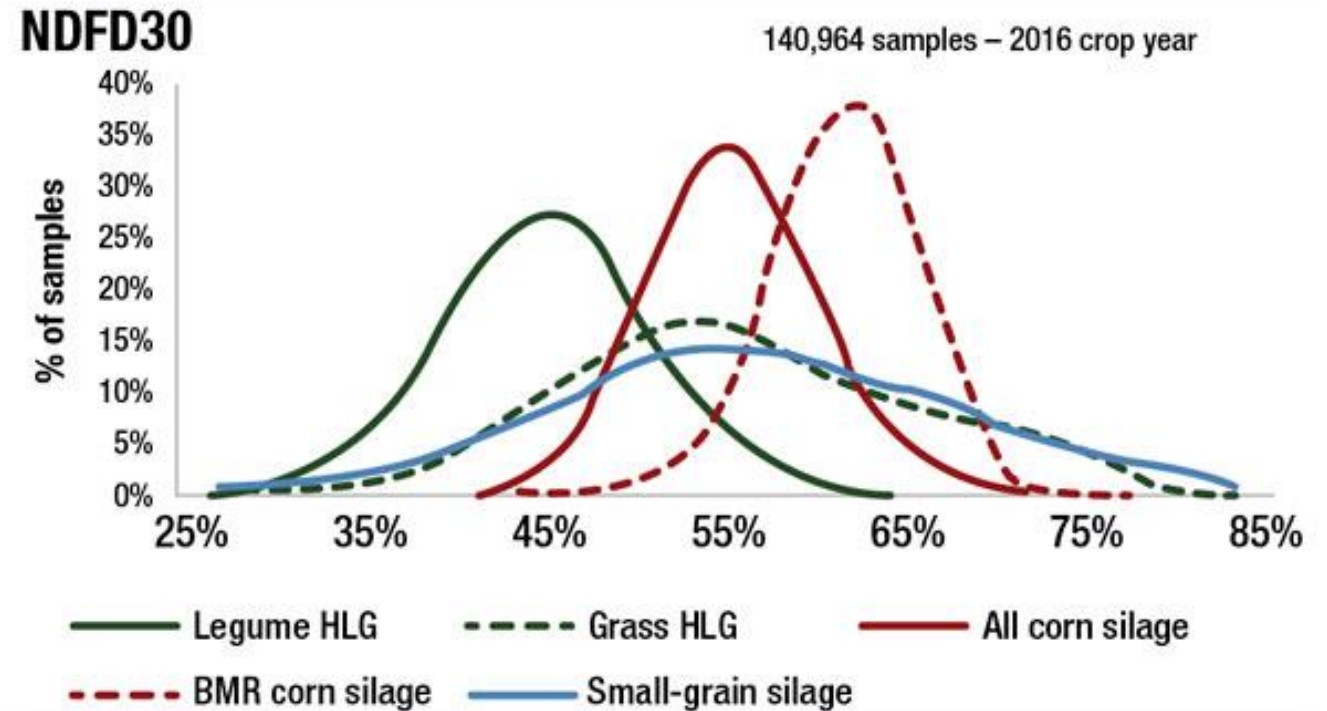
- 86% of global livestock feed is inedible by humans
- 73% can be eaten only by ruminants



Forage digestibility an old issue that still need to be solved

- Forages represent $\approx 1/2$ total DMI

FIGURE 1 NDFd at 30 hours in 2016 for various forage types based on 140,960 samples



Source: Dairyland Lab

Calving

≈ 30h

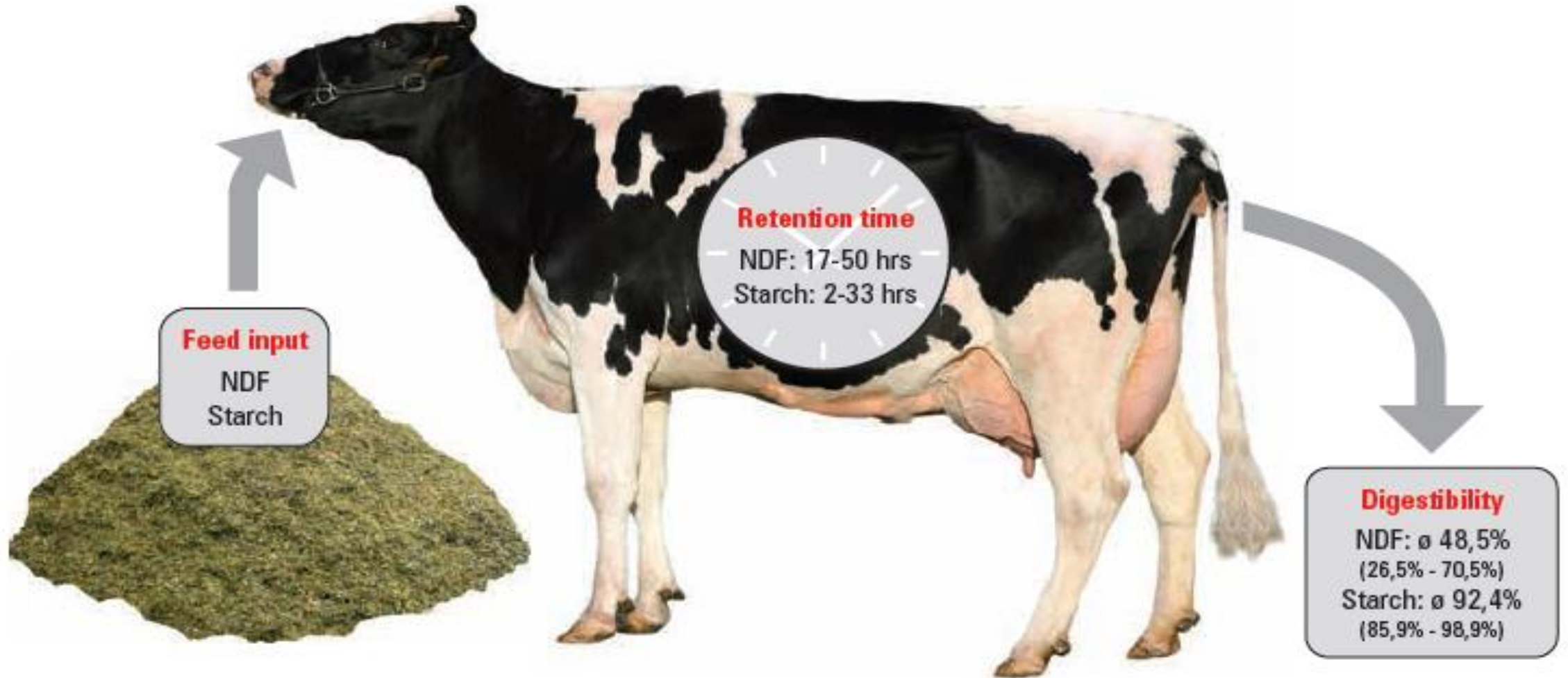
100d

≈ 45h

200d

Early lactation

Mid lactation



Improve rumen fermentation

- IFM – batch culture

