

Estonian Cattle Conference

241107

Lars Nielsen, Chief Breeding Officer, VikingGenetics



YOU GET WHAT YOU GO FOR

Efficiency



Health



Economy



Yield



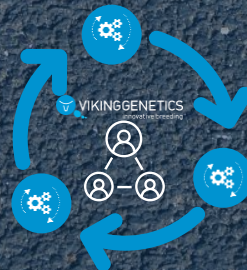
Conformation



Fertility



Cows suitable for robots



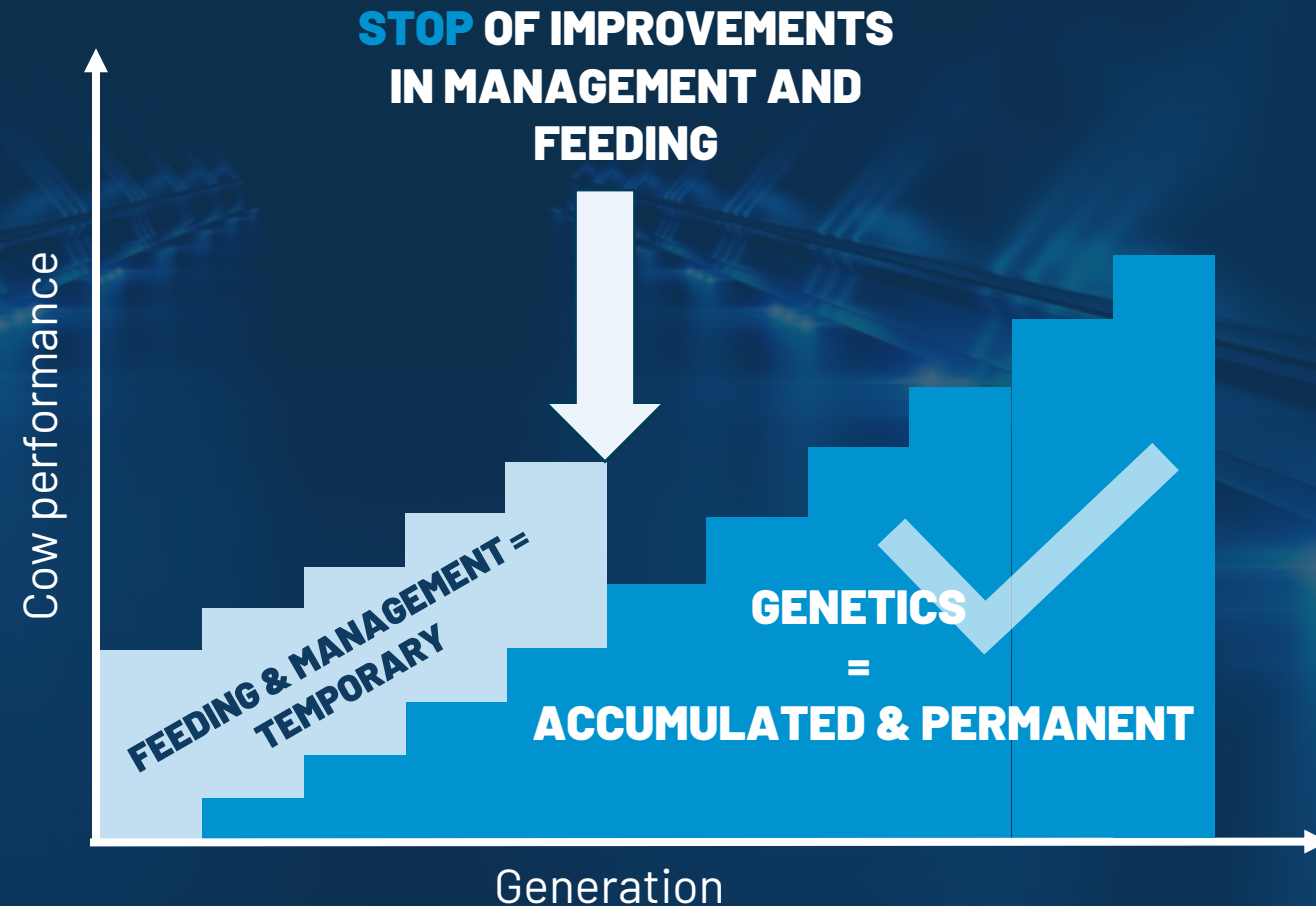
We are a COOP and need to deliver into members demands

Breeding is a long-term solution

ΔG



Why is breeding important?



VikingGenetics Breeding Programmes



 **VIKINGHOLSTEIN**



 **VIKINGRED**



 **VIKINGJERSEY**



PRO CROSS
MONTBELJARDE / HOLSTEIN / VIKINGRED
VIKINGRED / HOLSTEIN / MONTBELJARDE



 **VIKINGGOLDENCROSS**



 **VIKINGBEEF**

Pioneers in cattle breeding

Production
Calving
Daughter fertility
Body, Feet & Legs, Udder
Milkability

1980



General Health

1987



Hoof health

2011

Saved feed

2020

1982

Udder health



2005

Longevity
Calving direct

2016

Youngstock
Survival



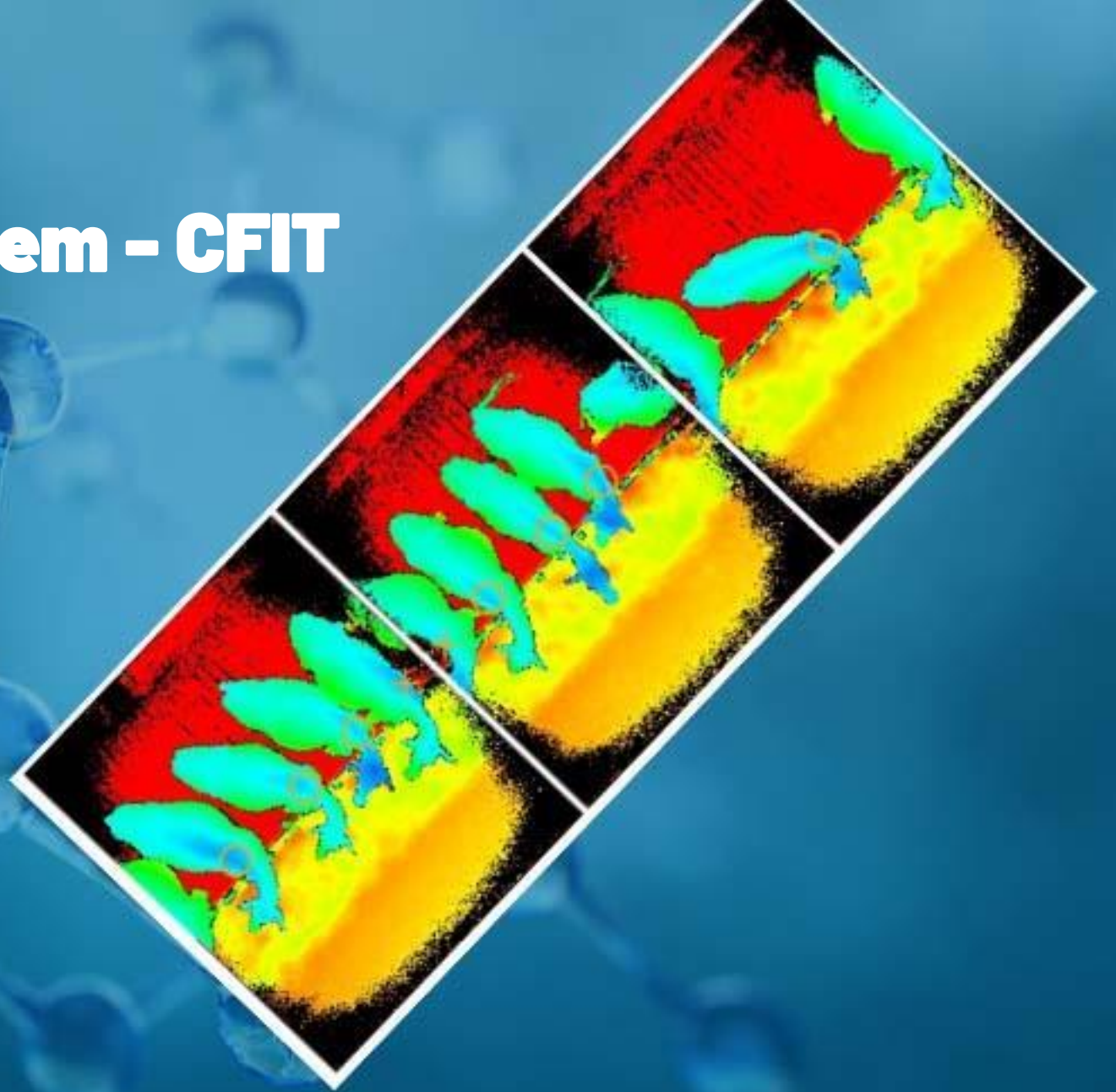
The Nordic Total Merit (NTM)

- **ALL traits** in NTM are of **economic importance**
- **>90 sub traits** combined into **15 main traits**



Cattle Feed Intake System - CFIT

measuring individual feed intake in commercial herds using 3D camera technology



Make a long lasting cow

Trait	Correlation %
NTM	41
Daughter fertility	45
General health	35
Hoof health	22
Udder health	44
Feet & legs	24
Udder	21
Yield	-6
Body	-27

Figures from Holstein genomically tested cows, NAV 2021

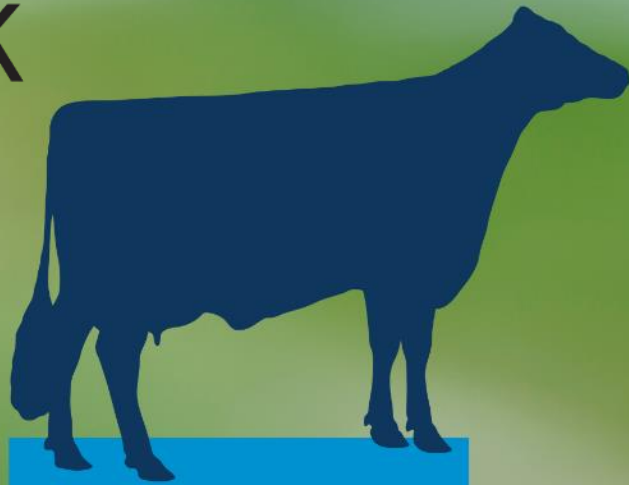




Why to choose VikMate

- New and improved web-based mating program **quickly and easily provides mating suggestions** with complete forecasting of **genetic progress**.
- Provides ultimate user experience to **tailor matings** to your needs and herd goals
- Evaluates more than **40 different traits** on each animal
- Help you make **the best decisions** for success of your dairy operation!

**HIGHER
PROFIT WITH**



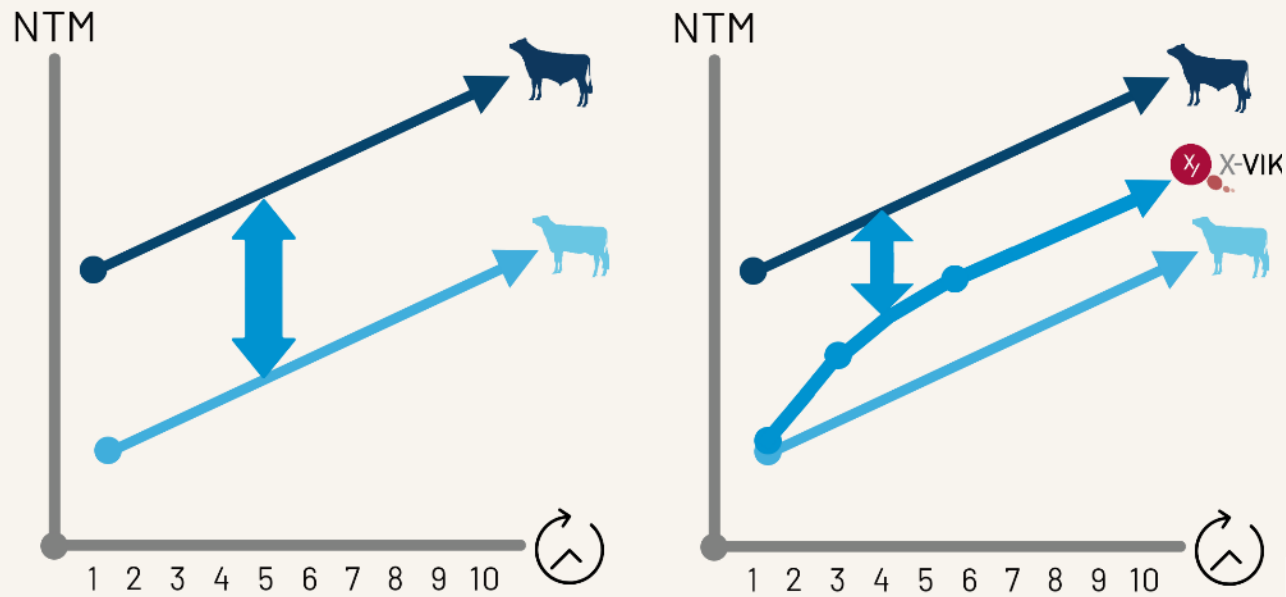
**Extra income
from higher
genetic level**



**Cost of genomic
test**



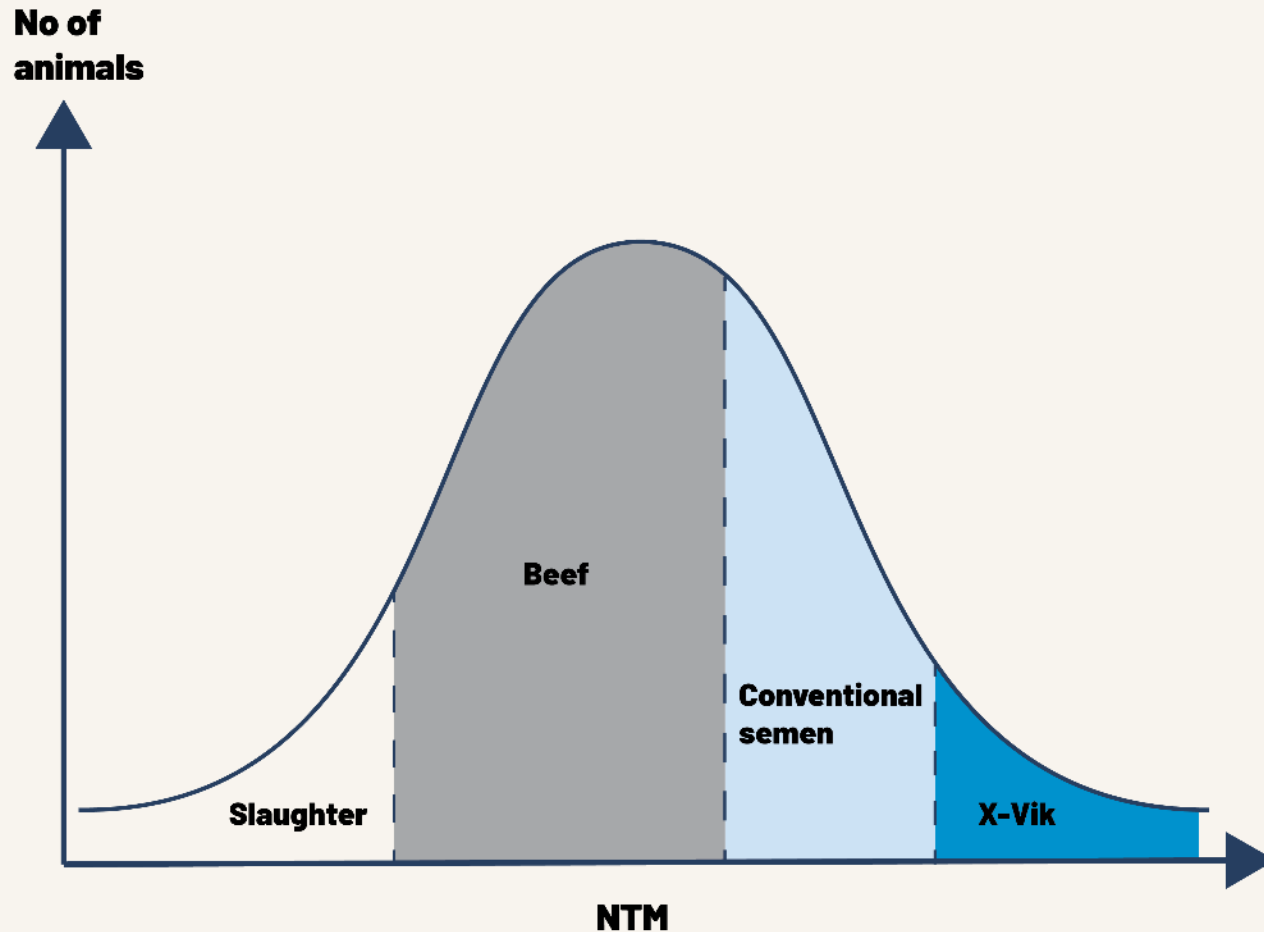
Breeding on farm level



With X-Vik you can **close the generation gap** between bulls and your herd by making the plan for “on-farm” selection

- Using **X-Vik semen on your best animals** will optimise progress in your herd
- This leads to **more genetically superior animals** => better profit

Decide on your breeding strategies



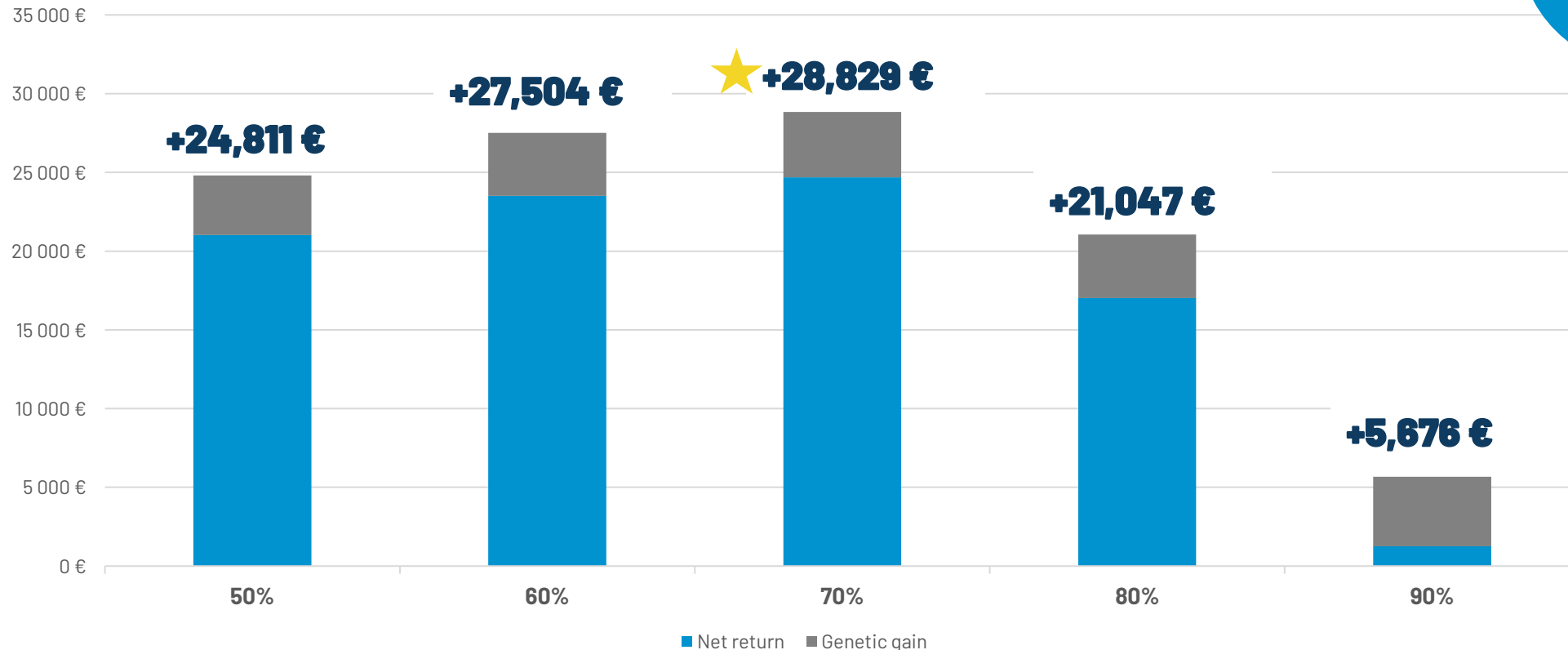
- Identify **your best females** to breed the next generation
- Categorize your female animals into **different breeding strategies**
- Using sexed semen and having a **strong reproductive program** provides an opportunity to create extra calves.

Extra profit per year: Net return + Genetic gain

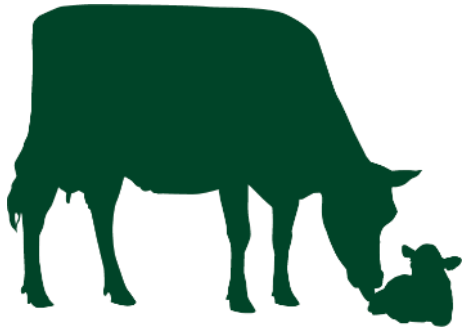
Herd with 200 cows (HOL / RDC)
good reproduction performance

100% sexed on heifers (2x) and 50% on 1st parity cows (2x)
% beef

+28,830 €
per year

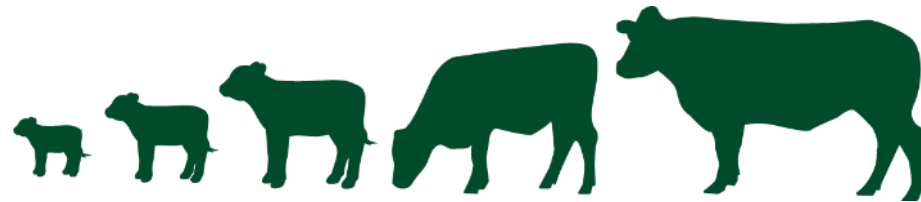


Traits in NBDI (Nordic Beef on Dairy Index)



Birth index

- Ease of calving
- Calf survival



Growth index

- Daily carcass gain
- Carcass conformation score
- Carcass fat score



Youngstock survival index

- Early period (day 1-30)
- Late period (day 31-200)

To calculate the index, the bulls are progeny tested on **dairy cows in Denmark, Sweden and Finland** within the dairy breeds Holstein, Jersey and VikingRed. Four times a year, in February, May, August and November, the index is re-calculated in the proof run, adding new bulls who have enough offspring to have a reliable index published.

Thank you!